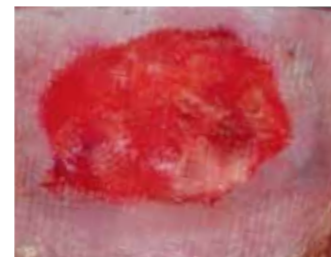


# Wound Care Protocol using L-Mesitran™ honey dressings

hydro-active dressings / provide and maintain moist wound healing environment / supports optimal healing

L-Mesitran®

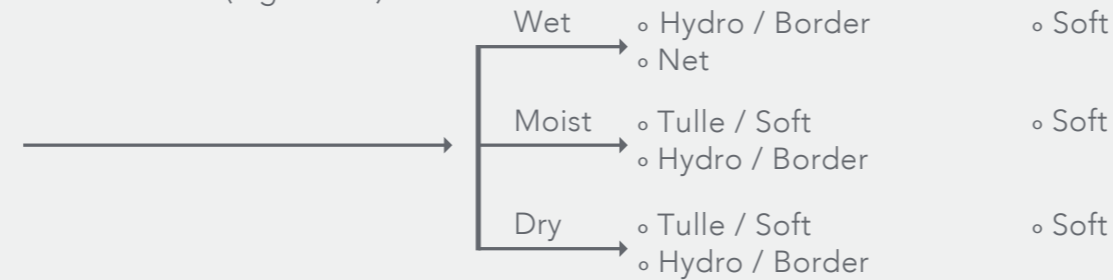
## CHRONIC AND ACUTE WOUNDS



**The wound is RED**

- protective layer
- provides and maintains a moist environment
- stimulate epithelisation

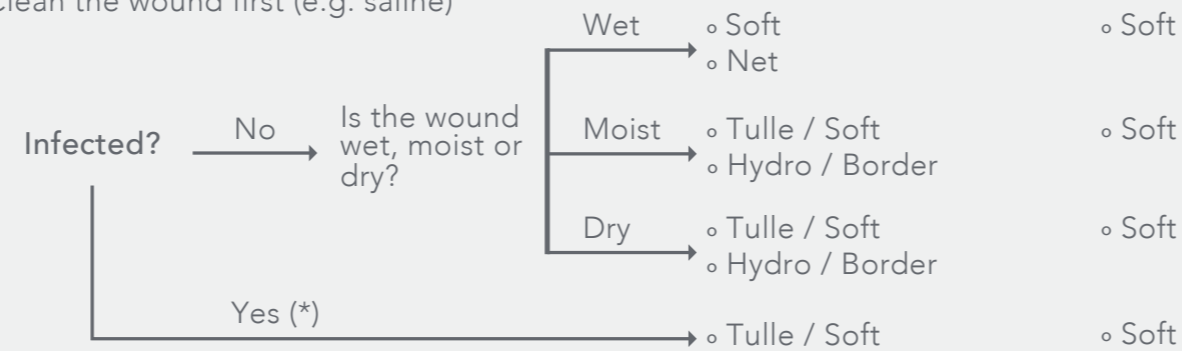
Clean the wound first (e.g. saline)



**The wound is YELLOW**

- provides and maintains a moist wound environment
- supports optimal healing and debridement

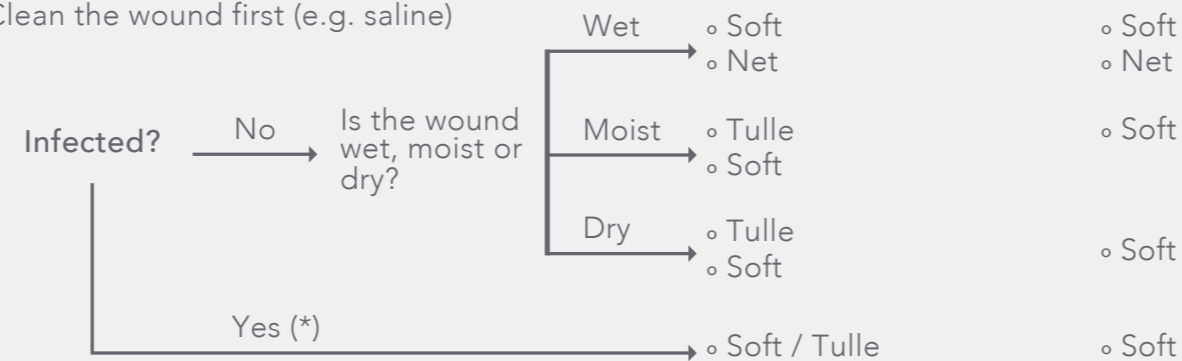
Clean the wound first (e.g. saline)



**The wound is BLACK**

- provides and maintains a moist wound environment
- supports debridement

Clean the wound first (e.g. saline)



## POST-OPERATIVE WOUNDS



## SUPERFICIAL WOUNDS DEEP WOUNDS



### L-Mesitran Soft - 40% medical grade honey

- Woundgel with 40% medical grade honey, hypoallergenic lanolin, PEG and anti-oxidants vitamins C and E
- Indicated for e.g. diabetic foot ulcers, venous ulcers, pressure sores, 1st and 2nd degree burns, donor sites and traumatic/surgical wounds
- Cover with an appropriate secondary dressing based on the amount of exudates of the wound: e.g. regular gauze (will not adhere), foam, alginate etc.
- Replace the gel after 1-3 days, depending on the amount of exudates

### L-Mesitran Soft sachets - 40% medical grade honey

- Easy to use disposable sachets with L-Mesitran Soft
- Enough to cover a 2"x2" wound, ideal for small wounds, post operative use and first aid
- Can be covered with an appropriate secondary dressing based on the amount of exudates of the wound: e.g. regular gauze (will not adhere), foam, alginate etc.
- Replace the gel after 1-3 days, depending on the amount of exudates



### L-Mesitran Soft syringes - 40% medical grade honey

- Pre-filled syringe with L-Mesitran Soft, for easy applications
- Cover with an appropriate secondary dressing based on the amount of exudates of the wound: e.g. regular gauze (will not adhere), foam, alginate etc.
- Replace the gel after 1-3 days, depending on the amount of exudates

### L-Mesitran Tulle - 40% medical grade honey

- Non-adherent synthetic dressing with L-Mesitran Soft
- Ideal for superficial wounds, burns, donor sites and traumatic injuries
- Cover with an appropriate secondary dressing based on the amount of exudates of the wound: e.g. regular gauze (will not adhere), foam, alginate etc.
- Replace the dressing after 3-5 days, depending on the amount of exudates

### L-Mesitran Hydro - 30% medical grade honey

- Hydro-active dressing with 30% medical grade honey, polymers and water
- Indicated for superficial chronic and acute wounds,
- Fixate with (adhesive) tape or regular gauze, will not adhere to the wound
- Replace the dressing after 3-5 days

### L-Mesitran Border - 30% medical grade honey

- Hydro-active dressing with 30% medical grade honey, polymers and water with an adhesive border
- Indicated for superficial wounds
- Self-adhesive and allows for showering and even swimming
- Replace the dressing after 3-5 days

### L-Mesitran Active - 30% medical grade honey

- Hydro-active dressing with 30% medical grade honey, polymers and water with an adhesive border
- Indicated for small sized superficial wounds, e.g. puncture wounds
- Self-adhesive, showering or swimming is possible
- Replace the dressing after 3-5 days

### L-Mesitran Net - 20% medical grade honey

- Hydro-active wound contact layer with medical grade honey, polymers and water
- Indicated for wounds with moderate to heavy exudates
- Cover with absorbent dressings or compresses and fixate with regular adhesive gauzes
- Replace the dressing after 3-5 days